

HELP OF DOOR COUNTY, INC.

HELP's Highlights

Eliminating Domestic Abuse

FALL 2010

Crisis Line: 800.914.3571 or 920.743.8818 Office: 920.743.8785



SPECIAL POINTS OF INTEREST:

- **Collaboration Helps Victims Leave**
- **Thank you**
- **Women's Fund**
- **Celebrating Community**

HELP of Door County has received 282 domestic violence hotline calls from January 2010 to June 2010 totaling 88.27 hours, averaging 18.8 minutes per call.



INSIDE THIS ISSUE:

- Thank you** 2
- Women's Fund** 3
- Celebrating Community** 3

Collaboration Helps Victims Leave

by: *Orlaine Gabert*



Often a victim only gets out of an abusive situation by agencies working together. Recently an older adult, Judy, was brought to the office by a friend. Judy had been living with her adult son for about a year. Throughout her entire stay, she had been both verbally and physically abused. She no longer wanted to stay there.

HELP- initially provided advocacy by listening to her situation and offering her alternative actions that she could take.

Sheriff's Department- Judy decided to file a complaint. An investigator came promptly and with kindness took a statement. An arrest was made. During that process, HELP staff went with Judy to get her belongings, including her car, with an officer present.

District Attorney-filed charges and included Judy's request that her son has no contact with her during the court process.

HELP- provided Judy a safe home for several days while she determined where she wanted to live. Advocacy was given to help Judy explore alternatives. She did have some needs for assistance. She decided she wanted to stay temporarily with her daughter in Illinois.

Department of Social Services- got in contact with adult services in Illinois and found a resource for when Judy moved there to help her with her needs and determine alternative living situations.

HELP- with financial assistance from Social Services, Judy was transported to her daughter's home in Judy's car. Judy was also given information about domestic violence program resources.

Circuit Court- The case is currently pending a decision whether or not there will be a trial. A court date needs to be set. Judy is now living in an older adult apartment complex with some services from Illinois Social Services and has regular contact with her daughter there. Her son has honored the no contact order.

Collaboration:

The act of working together; united labor. A recursive process where two or more people or organizations work together in an intersection of common goals.



Be a part
of social change.
When you see
or hear violence,
speak up and try
to make a
difference!



▪ 13% of intentional animal abuse cases involve domestic violence.

[Humane Society of the U.S. (2001). 2000 Report of Animal Cruelty Cases. Washington, DC.]



Proud to be a United Way
Funded Partner

Special Thanks

To:
Main Street Market
and
Gordon Lodge



Thanks to the many businesses, organizations, and individuals that contributed fine merchandise and services. HELP's Taste of Distinction, held June 27, 2010, generated much needed revenue to subsidize domestic abuse programs and services provided locally by HELP of Door County, Inc. If you were inadvertently omitted, please notify HELP and accept our deep apologies. We hope to see you in 2011!!

- | | | | |
|----------------------------------|-----------------------------|---|------------------------------------|
| Alpine Inn | Dorothy Wickman | Neuburg Wine Company | Wilkins & Olander,
Sturgeon Bay |
| Allstate Liquor & Wine Co. | Dorothea Carson | On Deck - Fish Creek | Wilson's Restaurant |
| Amy Bremel | Drew & Mary Witteborg | Pasta Vino | Wine Merchants |
| Arvid & Lola Munson | Ellison Bay Pottery | PC Junction | Wirtz Beverage |
| Baylake Bank | English Inn | Pelletier's | Wood Orchard |
| Bea's Ho-made Products | Fine Line Designs Gallery | Peninsula Players | Yankee Clipper |
| BEDZ Lawn Care | Fish Creek Market | Pete Thelen | |
| Birch Creek | Fred & Fuzzy's | PKJ Designs/Michael
Beaster Functional Art Furniture | |
| Blue Horse Bistro & Espresso | Gibraltar Grill | Purple Feet Wines | |
| Bluefront Café | Glidden Lodge | R.C. Wahl Jewelers | |
| Casey's BBQ & Smokehouse | Good Eggs | Renard's Cheese | |
| CheeseCake, Etc. | Gordon Lodge | Rusty Rabbit | |
| Chelsea Antiques/Blue Willow | Gwendolyn's | Scaturo's | |
| Cheryl Polster | Harbor Fish Market & Grille | Second Story Restaurant | |
| Child's Play | Hickey Brothers Market | Serves You Right/Door County Gourmet | |
| Chocolate Chicken | Idlewild Golf Course | Sherry's Hallmark | |
| Clay Bay Pottery | Inn at Kristofer's | Shoreline Supper Club | |
| Cornerstone Pub | Jacinda Duffin | Siobhan's Wine Spirits | |
| Cornucopia | Joe Jo's Pizza and Gelato | Sister Bay Bowl | |
| Copies Plus More | Julie's Café & Motel | Sister Bay Café | |
| County Quilters | Kimz Galley Café | Spa at Sacred Grounds | |
| Curt's Spices/Oilerie Fish Creek | Lagniappe's Wine Gallery | Sue Woerfel | |
| Custom Sealcoating | L'eft Bank | Sweetie Pies | |
| Dal Santo's | Liberty Square | The Building for Kids | |
| Dancing Bear | Maas Floral | The Cook Book | |
| DC Candleworks | Madison Avenue Wine | The Edge Salon | |
| DC Deli | Maggie Ter Horst | The Green Bay Packers | |
| DC Ice Cream Factory | Main Street Market | Third Coast Wine Werks | |
| DC Natureworks | Mayberry's Carriages | Trillium | |
| Dick & Annie Egan | Milwaukee Brewers | Trio | |
| Donny's Glidden Lodge | Milwaukee Bucks | Uncle Tom's - Newport School Candies | |
| Door County Coffee & Tea | Mission Grille | Viva La Cottage | |
| Door Landscape | Monticello | Whistling Swan | |
| Door Shakespeare | Nala's Fromagerie | White Gull Inn | |
| | Nautical Inn | | |

Women's Fund of Door County Being Introduced

Through a brochure, radio announcements, 'Let's Dish' gatherings, and word of mouth, the community is becoming aware of Door County's Women's Fund. Extensive research found that Door County women are more likely than men to face poverty, unemployment or underemployment, inadequate housing and lack healthcare. This is the only endowment fund that will address the well being of women and girls and is concerned with all facets of women and girls lives. The Women's Fund of Door County will grant funds to non profit agencies that serve women, promote community-wide understanding of the status of women and girls to improve their quality of life, and offer everyone the opportunity to be a philanthropist.

A *Celebrate Women Luncheon* is to be held on Tuesday, September 1, 2010, at 11:30am at Stone Harbor Resort, Sturgeon Bay with a ticket price of \$30.00. The speaker is Mary Pierce, who with humor and inspiration, reminds us that "We're All Connected." She comes highly recommended. Your attendance is encouraged. Please consider buying a second ticket to donate to a woman who could not normally afford to attend. HELP of Door County, Inc. would be happy to see that those tickets are distributed. The Women's Fund of Door County is one additional way to help women and girls thrive. Please go to their website: www.womensfunddoorcounty.org for more information and consideration giving a donation.



Mary Pierce

Upcoming DV Month Events



October – Domestic Violence Awareness Month

Purple Ribbon Campaign

The purple ribbon is a symbol of support for survivors and victims of domestic violence. Hence, why it is the center of HELP's logo.

Across the country, families and friends of victims wear the purple ribbon to remember and honor their loved ones who have lost their lives at the hands of a person they once loved.

Wear a purple ribbon in our community to send a strong message:

There is no place for domestic violence in our homes, neighborhoods, schools and workplaces.

Celebrating Community

On Labor Day, September 6, 2010, HELP of Door County, Inc. will join Midsummer's Music and The Ridges Sanctuary for an afternoon of music, conversation, food, and wine.

Anders Yocum of Wisconsin Public Radio will highlight the mission of each organization and introduce an exciting musical program. The concert will be followed by an elegant reception catered by Alexander's of Fish Creek.

The event will take place in Birch Creek's Juniper Hall beginning at 3:00 pm. Tickets are \$85 with proceeds supporting three major facets of life in Door County – Human Services, the Arts, and the Environment.

Call the Midsummer's Music office at 854-7088 or go to www.midsummerSmusic.com to reserve your place for this very special occasion.



HELP of Door County, Inc.
Eliminating Domestic Abuse
219 Green Bay Road
Sturgeon Bay, WI 54235-2835

US Postage PAID
Non-Profit Org
Sturgeon Bay
Wisconsin 54235
Permit No. 40

Crisis Line 920.743.8818
Toll Free 800.914.3571
Office 920.743.8785
Sister Bay 920.854.9372

WE'RE ON THE WEB!

www.helpofdoorcounty.org
Facebook: Helpof DoorCo
help@helpofdoorcounty.org

HELP's Hope; The Giving Corner

(This list changes periodically based on our current needs)

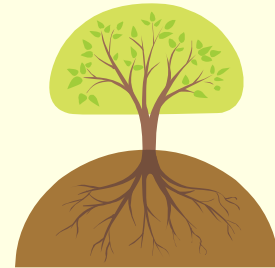
WE ARE IN DESPERATE NEED OF ALL OF THESE ITEMS

▪ **Office Supplies:**

- Copy paper: 8 1/2 x 11, legal, and/or ledger size
- Colored copy paper: any colors
- General Office Supplies

▪ **Miscellaneous**

- **—**Personal Care Items; tampons, pads, panty liners razors, deodorant**
- **—**Toilet Paper, Paper Towel**
- Gas Cards**
- Gift Cards (Target, Wal-mart, Pamida, Younkers)
- Grocery Cards (Econo, Pick'n Save, Piggly Wiggly, Main Street Market)
- Utility Cards
- Medium to Large Flat Screen for Visitation & Exchange for children to watch movies and play Wii games
- Used cell phones



Planned Giving

As always, including HELP in your will as a beneficiary of stock, estate, or trust is appreciated. Feel confident your gift through planned giving will continue to make a difference in the afterlife.

True philanthropists never die!

Endowment

Invest in HELP's future....HELP's endowment is truly "safe" investing! You'd be investing in keeping clients safe! The best form of safety planning is ensuring we are here for future clients.

*The mission of HELP of Door County, Inc. is to:
eliminate domestic abuse through prevention and intervention services and to advocate for social change.*