



# HELP OF DOOR COUNTY, INC.

## HELP's Highlights

Eliminating Domestic Abuse

SPRING 2009

### SPECIAL POINTS OF INTEREST:

- **Special Thank You to Delane Jome**
- **Child Abuse Prevention and V&E Awareness**
- **Enlarge Equality Wheel!**



### INSIDE THIS ISSUE:

Special Thank You To...	2
Child Abuse & V&E	2
How to help HELP	3
Upcoming Events	3
Board Members	4
Contact Us	4
Wish List	4

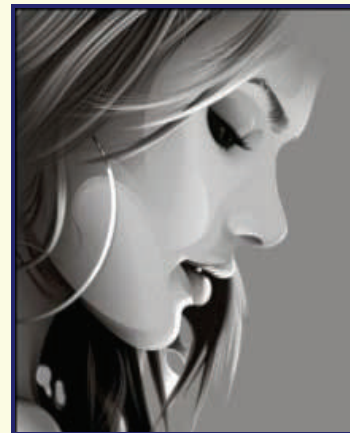
## Letter from the Director:

In 2008, HELP provided critical, invaluable and essential programs and services to our community. Your support assisted in providing the following: direct advocacy services to victims of abuse; domestic abuse victim group support for women and children; 24-hour emergency services for victims of abuse; a Northern Door domestic abuse outreach office in Sister Bay; Supervised Visitation and Exchange Program for children; three Visitation and Exchange sites in Northern Door; an Alternatives to Violence educational program for persons who have abused their partners; and the only 24-hour crisis and referral hotline in Door County.

As a community, we demonstrate our strength through our ability to help those in our midst who are most vulnerable, fragile and in the greatest need. The generosity of our community provides 54% of our income. I am available to discuss options of support whether stocks and bonds, direct deposit, planned giving or an investment to HELP's endowment fund.

Please consider becoming a life-long contributor to HELP through planned giving. A contribution to our endowment fund is an investment in Door County's greatest resource--- its people.

Barb Maskell



**47 % find us  
by word of mouth.**

Our Newsletter is now online! If you wish to have the newsletter sent via email – please call us with your email address, or email us at: [help@helpofdoorcounty.org](mailto:help@helpofdoorcounty.org).

## Remembering Lyn Hirst

November 7, 2008

Lyn was trained as a Volunteer HELpline Operator in 1997 and her volunteering since never ceased. Lyn always had something wonderful to share at HELpline meetings. She would actively search for information to assist a caller or the agency. Lyn also volunteered with bulk mailings, (wo)maned registration tables at events and assisted with office

support. In 2000, Lyn was recognized as HELP's Volunteer of the Year.

Outside of HELP, Lyn was active in civil rights, the local arts, and Hope United Church.

Lyn passed away November 7, 2008. She was loved and will be missed. Her connections to HELP will be treasured.



# A Huge Thank You to someone Special!

A HUGE thank-you to **Delane Jome**, the Make A Difference Door County Committee and Thrivent Financial Chapter 30059.

Ms. Jome successfully established a Make A Difference campaign in Door County.

In October, communities nation wide get together to Make A Difference.

Several years ago, Ms. Jome contacted HELP with the idea of developing a personal care product closet. Items such as shampoo, toothpaste,

deodorant, and diapers were collected in October at schools, churches and area businesses. Items collected are those that cannot be purchased with food stamps or may not be purchased at all due to lack of personal funds.

Ms. Jome retired her Make A Difference duties in 2008.

Through Delane's efforts, the campaign continues all year and is no longer just an October, Make A Difference event.

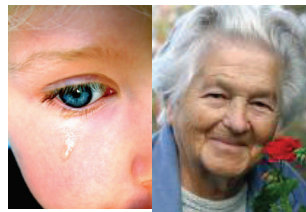
Please help by donating to the 'community closet' at HELP.



*Be a part of social change. When you see or hear violence, speak up and try to make a difference!*



Proud to be a United Way Funded Partner



## Child Abuse Prevention Month & Visitation & Exchange Awareness Month & Older Americans Month



April is Child Abuse Prevention Month and May is Visitation and Exchange Awareness Month and Older Americans Month. Here is what HELP is doing in programming to prevent child abuse and elder abuse:

### Children's Services

- ◆ Weekly children's support group
- ◆ Individual support with safety planning.
- ◆ Teen services include dating violence prevention and awareness and healthy relationship education.
- ◆ School education outreach on bullying, healthy relationships, dating relationships, domestic violence and various other topics.

### Visitation & Exchange

- ◆ Monitored exchanges provided in accordance with custodial arrangements, as a safer option for parents to exchange their children by eliminating the contact between parent
- ◆ Supervised visits give the opportunity for non-custodial parents to maintain a relationship with their children in a neutral setting

### Older Adult Services

- ◆ Provides resources to address immediate safety
- ◆ Legal advocacy
- ◆ Individual support
- ◆ Educational groups
- ◆ Prevention program that addresses risk factors, encourages networking, and identifies resources for the older adult

**You are cordially invited to:  
HELP of Door County's  
Annual Meeting & Volunteer Recognition  
CELEBRATING 30 YEARS**

Tuesday April 21, 2009  
5:30pm Social Hour  
6:30pm Program

Liberty Square Bistro Board Room  
7755 Hwy 42  
Egg Harbor, WI 54209

Hors d' oeuvres served

**Please RSVP to: 920-743-8785 before April 6<sup>th</sup>, 2009**  
\$15.00 per person is appreciated

**This is the only notice you will receive of this event .**

**Adopt a Family Project Seeks Year-round Support**

HELP supporters once again gave generously - an astonishing \$11,198.58 that went directly to clients in the form of gas cards, grocery cards, discount store gift cards, meals, and wonderful, personal gifts. This year twenty-two HELP families were the beneficiaries of the Adopt a Family project. HELP wishes donors and volunteers a huge thank you for assisting our clients and making their spirits bright this holiday season.

We are especially grateful for the outpouring of gas cards, grocery cards, discount store gift cards and restaurant gift certificates that were given to HELP with the care and understanding that they are to be used for future clients. The cards are best used to meet a client's immediate needs as well as to provide assistance to feed their families, provide gas for work/school, and even clothes or other unforeseeable needs throughout the year. We are seeing a greater demand for gift cards, which allow us to be better suited to tailor giving to meet a clients' specific needs. We strongly encourage donors to keep us in mind year-round for gift card giving.



**Domestic Violence  
affects those that  
you love  
1:4 girls & women  
are victims**

**10 Ways to help  
HELP**

1. Direct donation
2. Grocery Gift Cards
3. Gas Cards
4. Wal Mart, Target, Pamida Gift Cards
5. Endowment
6. Estate Planning
7. Pledges
8. Volunteering
9. 'We Care' at Pick-n-Save
10. Cell Phones

**Upcoming  
Events**



**April**

***Annual Meeting***

April 21, 2009 Liberty Square Bistro Board Room, Egg Harbor  
Anne Kok Award to be presented

***Child Abuse Prevention Month***

**May**

***Visitation & Exchange  
Awareness month***

***Older American Month***

**June**

***HELP's Private Reserve***

June 22, 2009  
Horseshoe Bay Farms  
Egg Harbor

***World Elder Abuse Awareness Day***

June 15, 2009

**July**

***Art on the Quiet Side***

July 4th & 5th, 2009  
Lakeside Park Jacksonport

**September**

***Open Door To Autumn Art***

September 19, 2009  
3rd Avenue in conjunction with  
Sturgeon Bay Harvest Festival



**HELP of Door County, Inc.**  
*Eliminating Domestic Abuse*

219 Green Bay Road  
Sturgeon Bay, WI 54235-2835

Northern Door Office:  
PO Box 652  
10924 Olde Stage Rd  
Sister Bay, WI 54234-0652

Crisis Line 920.743.8818      Toll Free 800.914.3571  
Sturgeon Bay 920.743.8785      Facsimile 920.743.9984  
Sister Bay Office: 920.854.9372



**2008-2009  
Board of Directors**

Don Heeringa  
**President**

Maggie Ter Horst  
**President-elect**

Bryn LeClair  
**Secretary**

Arvid W. Munson  
**Treasurer**

Thomas S. Bronsky  
Jacinda Duffin  
Kathleen Harris  
Laurel Jessup  
Martha Sauter  
Laura Seefeldt  
Jan Scoville

**WE'RE ON THE WEB!**  
[www.helpofdoorcounty.org](http://www.helpofdoorcounty.org)

**But we are under  
construction!**



**Community Closet Wish List**

(This list changes periodically based on our current needs)

**WE ARE IN DESPERATE NEED OF ALL OF THESE ITEMS**

(All items should be new and unused. Due to health regulations, we are no longer accepting items collected from motels/hotels.)

• **Personal Care Items:**

- Toilet paper, paper towels, tissue
- Deodorant (women's and men's)
- Pads and tampons
- Shampoo
- Conditioner
- Razors -disposable (women's and men's)
- Shaving Cream
- Laundry detergent
- Adult Toothbrushes
- Tooth Paste
- Diapers (all sizes)
- Wipes

• **Miscellaneous**

- Safe Homes for victims
- Exterior Lock Sets
- Markers for children
- Gas Cards
- Gift Cards (Target, Wal-mart, Pamida)
- Grocery Cards (Econo, Pick'n Save, Piggly Wiggly, Main Street Market)
- Utility Cards

**HELP of Door County Needs:**

• **Office Supplies:**

- Copy paper: 20#, (8 1/2 x 11, legal, and/or ledger size)
- Colored copy paper: 20#, any colors
- Pens, Pencils
- General office supplies

**Pick'n Save 'We Care' number 316780.**  
Sign up today to have a percentage of your dollars help HELP of Door County, Inc.!

*The mission of HELP of Door County is to:  
eliminate domestic abuse through prevention and intervention services and to advocate for social change.*