



# HELP OF DOOR COUNTY, INC.

## HELP's Highlights

Eliminating Domestic Abuse

FALL 2009

### SPECIAL POINTS OF INTEREST:

- Domestic Abuse Awareness Month
- Amy Bremel appointed to Governor's Public Health Council
- Animal Cruelty

### INSIDE THIS ISSUE:

- Adopt a Family 2
- Animal Cruelty 2
- Wine Event 3
- Board Members 4
- Contact Us 4
- Wish List 4
- Planned Giving Endowment 4

## Domestic Abuse Awareness Month by Erica Dimmett

What message are *you* sending victims of domestic violence? According to the Department of Justice, one in four women will be a victim of domestic violence in their lifetime. Therefore every day each of us are face to face with a victim of domestic violence.

### Would they know that you think domestic violence is wrong and unacceptable?

Would they feel your use of language or day to day behavior and decisions emulates the idea of peace and safety in our homes and in our families? We all make decisions and share opinions that affect

domestic violence victims. By ignoring the issues, we ignore the victim. By watching public policies pass that ignore the need to help domestic violence victims with their struggle to live in peace, we are ignoring the victim. We again ignore the victim when we blame them for not leaving the violence and are allowing their children to remain in the abusive situation.

We all play a significant role in the lives of domestic violence victims. It is up to us to set aside our preconceived notions to look outside our ourselves

and stand beside a victim.

**What will you do?** Would you volunteer your services to a victim of domestic violence? Would you lend a nonjudgmental ear to someone that needs support? Would you say a prayer to protect those that cannot protect themselves? Would you support the people that are fighting every day to end domestic violence?

October is Domestic Violence Awareness Month. What better time to define your role in the fight to end domestic violence? As Henry David Thoreau said "things do not change; we change".

### Amy Bremel appointed to Governor's Public Health Council!

The staff at HELP of Door County, Inc. would like to congratulate their co-worker Amy Bremel for being appointed to Governor Doyle's Public Health Council. Amy is the Marketing and Development Director and the Volunteer Coordinator at HELP.

The Public Health Council advises the Department of Health Services, the Governor, the Legislature and the public in the implementation of the State of Wisconsin's 10 year public health plan and 2020 Healthiest Wisconsin.

Amy has an extensive background in public health issues. Her BS is in Communications and her master's is in Women's Studies. Her thesis analyzed the health care system's response to women with endometriosis.

Amy has interned in Edinburgh, Scotland with the BBC to create AIDS prevention awareness and has interned at a women's reproductive health clinic in La Crosse, WI. More recently, she has worked with at-risk youth on issues involving cutting, AODA, inhalants, and bullying. In addition to her work at HELP, she is working as the Door County Alcohol and other Drug Coalition Coordinator. Amy's passion for domestic abuse services will be conveyed through this council by addressing access to health care. She acknowledges medical and mental health services as essentials for victims to heal the whole self. You can learn more about this council by going to: <http://publichealthcouncil.dhs.wi.gov/>



Be a part of social change. When you see or hear violence, speak up and try to make a difference!



13% of intentional animal abuse cases involve domestic violence.

[ Humane Society of the U.S. (2001). 2000 Report of Animal Cruelty Cases. Washington, DC.]



Proud to be a United Way Funded Partner

ADOPT A FAMILY CHANGES

It may seem like months until the holidays, yet as life goes, they will be here before we know it! This year, HELP has altered the Adopt A Family program to be more like its original format. There will no longer be an exact matching of a donor and client. There will be no formal profiles provided to donors with specific lists of client needs and wishes. Why? 1) To ensure client confidentiality is strictly adhered to (listing age, gender and size of children's clothes could be identifying information and in some cases prohibits families from participating). 2) The past format limited us to only the current fall clients and any new clients in need during Dec, Jan, Feb, etc. would not be matched 3) The immediate, emergency clients' needs were not being met.

Therefore, HELP staff has decided to con-

tinue the program by requesting donations from a list of general client needs. These gifts will be distributed to the appropriate clients. HELP still wishes to emphasize the need for Gift Cards year-round. These can be used anytime, by any client. New clients walk through HELP's door on an ongoing, year-round basis with sometimes very specific needs. Gift cards provide HELP the means to best address these personal needs on an individual basis.

General client needs: Tracfone & minutes, attorney fee subsidies, and Gift Cards: grocery, discount stores, gas, car repair/tires, phone cards, Tracfone minutes, & utility cards - \$25 increments encouraged.

Youth needs: New & unused school supplies

HELP thanks each and every donor for their past contributions to its Adopt A Family project and hopes you'll continue to remain loyal supporters. The shopping may not be as fun, but it will be just as meaningful for HELP's clients!

Animal Abuse & Human Abuse: Partners In Crime

Article Retrieved From: http://www.all-creatures.org/sof/animalabuse.html

A reprint of a People for the Ethical Treatment of Animals (PETA) article



"Anyone who has accustomed himself to regard the life of any living creature as worthless is in danger of arriving also at the idea of worthless human lives", wrote humanitarian Albert Schweitzer.

Because domestic abuse is directed toward the powerless, animal abuse and child abuse often go hand in hand. Parents who neglect an animal's need for proper care or who abuse animals may also abuse or neglect their children.

Children who abuse animals may be repeating a lesson learned at home; like their parents, they are reacting to anger or frustration with violence. Their violence is directed at the only individual in the family more vulnerable than themselves: an animal. One expert says, "Children in violent homes are characterized by...frequently participating in the pecking-order of battering," in which they may maim or kill an animal. Indeed, domestic violence is the most common background for childhood cruelty to animals.

Schools, parents, communities, and courts who shrug off animal abuse as a "minor" crime are ignoring a time bomb. Instead, communities should be aggressively penalizing animal abusers, examining families for other signs of violence, and requiring intensive counseling for perpetrators. Communities must recognize that abuse to ANY living individual is unacceptable and endangers everyone.

What You Can Do: Be aware of signs of neglect or abuse in children and animals. Take children seriously if they report animals being neglected or mistreated. Some children won't talk about their own suffering but will talk about an animal's. Don't ignore even minor acts of cruelty to animals by children. Talk to the child and the child's parents. If necessary, call social services.

## Special Thanks

To:  
Main Street Market  
and  
Horseshoe Bay Golf Club



## Upcoming Events



### September

#### **Open Door To Autumn Art**

September 19, 2009

3rd Avenue in conjunction with  
Sturgeon Bay Harvest Festival

### October

Domestic Abuse Awareness Month

*Thanks* to the many businesses, organizations, and individuals that contributed fine merchandise and services. HELP's Private Reserve, held June 22, 2009, generated much needed revenue to subsidize domestic abuse programs and services provided locally by HELP of Door County, Inc. If you were inadvertently omitted, please notify HELP and accept our deep apologies. We hope to see you in 2010!!

Alexander's  
Alpine Resort  
AmericInn  
Amy Bremel  
Applebee's  
Arlene Peterson  
Arvid & Lola Munson  
Associated Bank  
Birch Creek  
Bistro at Liberty Square  
Blacksmith Inn  
Bluefront Café  
Candleworks  
Chelsea Antiques/Blue Willow  
Child's Play  
Classy Glass Designs  
Cornucopia  
Country Lady, Country Squire  
Curt's Spice Co/Oilerie Fish Creek  
Dancing Bear  
Dick & Annie Egan  
Door County Cooperative  
DC Deli  
DC Gourmet/Serves You Right  
Door County Natureworks  
Door County Ice Cream Factory  
Door Landscape  
Edge Salon  
Edgewater Resort  
Ellison Bay Pottery  
English Inn  
Exquiz8 Energy

Family Video  
Fine Line Gallery  
Fish Creek Market  
Fred & Fuzzy's  
Fun Stuff  
Green Bay Packers  
Glidden Lodge  
Grizzly's Scenic Air Tours  
Gwendolyn's  
Harbor Fish Market & Grille  
Harbor Landing  
Hickey Brothers  
Horseshoe Bay Golf Club  
Icecreamsource.com  
Idlewild Golf  
Inn at Kristofer's  
Jacinda Duffin  
Jan Scoville  
Jennifer Dahl  
Joe Jo's Pizza and Gelato  
Julie's Café  
Madison Avenue Wine Shop  
Main Street Market  
Martha Sauter  
Michael Beaster  
Milwaukee Brewers Baseball Club  
Milwaukee Bucks  
Mission Grille  
Monticello on Jefferson  
Nala's Fromagerie  
Nathan Nichols & Co.  
Nautical Inn

Novel Ideas Bookstore  
Peninsula Players  
Peninsula School of Art  
Pete Thelen  
PKJ Designs  
Plum Loco Farm  
R.C. Wahl Jewelers  
Renard's Cheese  
Restaurant Saveur  
Rusty Rabbit  
Scaturo's  
Sherry's Hallmark  
Sister Bay Café  
Sister Bay Trading  
Six Flags  
Stone Wing Charters  
Sweetie Pies  
Target  
T. Ashwell's  
Thorp House Inn & Cottages  
Trillium Organics  
Trio  
Tundra Lodge  
Viva la Cottage  
Wal-mart  
White Gull Inn  
Wilkins & Olander  
Wilson's Restaurant & Ice Cream  
Wine Cellar  
Wood Orchard Market  
Yankee Clipper  
YMCA

## HELP of Door County, Inc.

### *Eliminating Domestic Abuse*

219 Green Bay Road  
Sturgeon Bay, WI 54235-2835

Crisis Line 920.743.8818

Toll Free 800.914.3571

Office 920.743.8785

Sister Bay 920.854.9372

US Postage PAID  
Non-Profit Org  
Sturgeon Bay  
Wisconsin 54235  
Permit No. 40

### **WE'RE ON THE WEB!**

[www.helpofdoorcounty.org](http://www.helpofdoorcounty.org)

Facebook: Helpof DoorCo

[help@helpofdoorcounty.org](mailto:help@helpofdoorcounty.org)

## HELP's Hope; The Giving Corner

(This list changes periodically based on our current needs)

### WE ARE IN DESPERATE NEED OF ALL OF THESE ITEMS

#### HELP of Door County Needs:

##### ▪ Office Supplies:

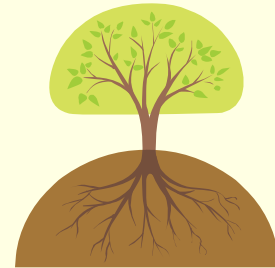
- Copy paper: 8 1/2 x 11, legal, and/or ledger size
- Colored copy paper: any colors
- General office supplies

- —TV for Children's Advocate
- —Used cell phones

##### ▪ Miscellaneous

- Safe Homes for victims
- Exterior Lock Sets
- Markers for children
- Gas Cards
- Gift Cards (Target, Wal-mart, Pamida, Younkers)
- Grocery Cards (Econo, Pick'n Save, Piggly Wiggly, Main Street Market)
- Utility Cards

- **Pick'n Save** 'We Care' number 316780.  
Sign up today to have a percentage of your dollars help HELP of Door County, Inc.!



#### Planned Giving

As always, including HELP in your will as a beneficiary of stock, estate, or trust is appreciated. Feel confident your gift through planned giving will continue to make a difference in the afterlife.

True philanthropists never die!

#### Endowment

Invest in HELP's future....HELP's endowment is truly "safe" investing! You'd be investing in keeping clients safe! The best form of safety planning is

*The mission of HELP of Door County is to:  
eliminate domestic abuse through prevention and intervention services and to advocate for social change.*